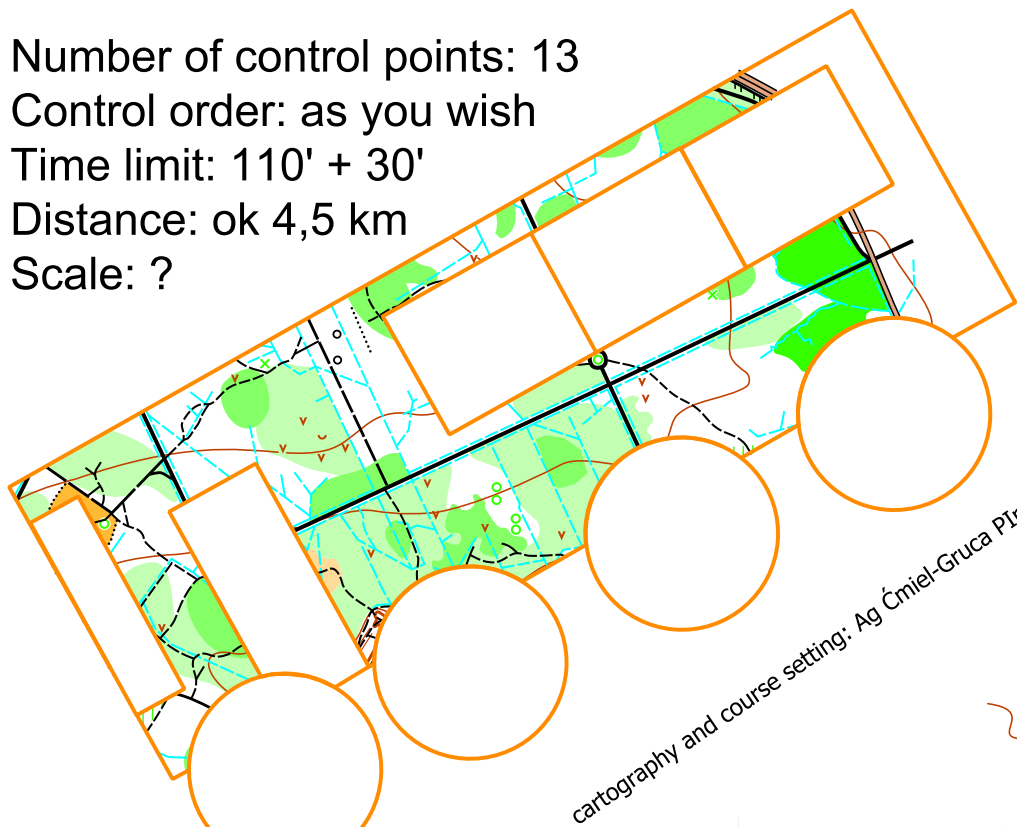


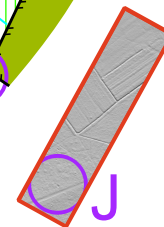
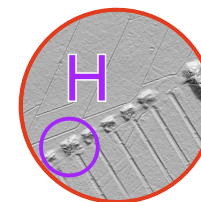
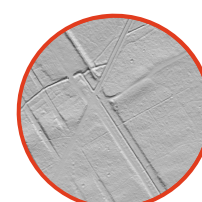
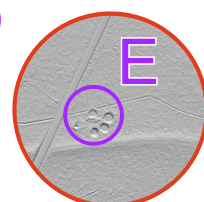
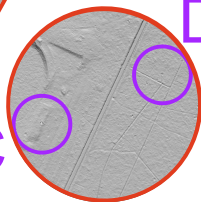
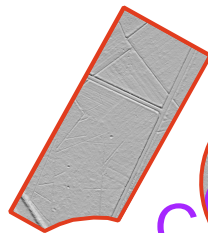
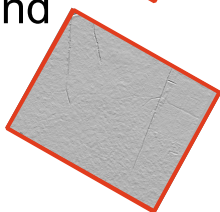
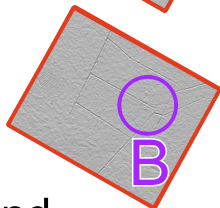
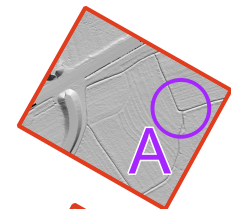
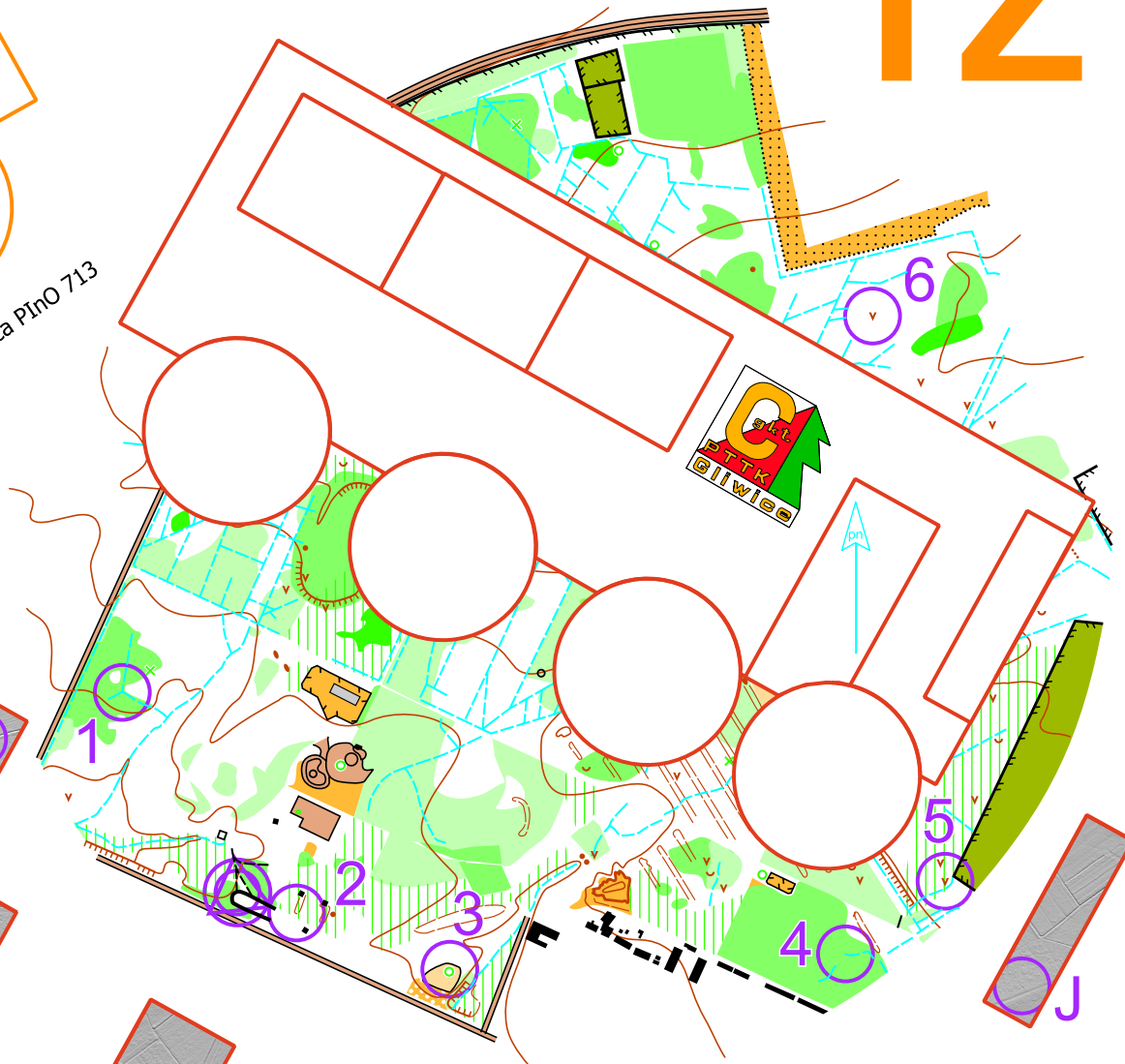
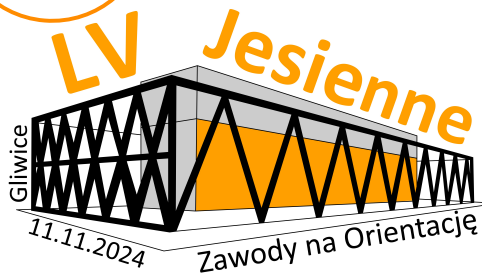
Number of control points: 13
 Control order: as you wish
 Time limit: 110' + 30'
 Distance: ok 4,5 km
 Scale: ?

Look in the mirrors!
 (buses are everywhere)

TZ



cartography and course setting: Ag Ćmiel-Gruca PIInO 713



Map from yellow bus (on the left) is mirrored map from red one, and yellow map has no missing symbols. Map around red bus lost most of its roads, footpaths etc. From red bus some lidar parts fell apart, match them again